



AVANI- SOFT Graphic Software

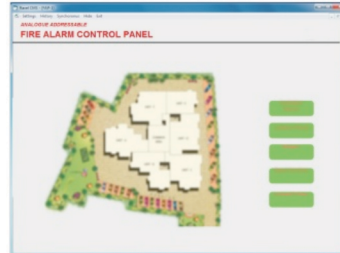
Description

The Avani Soft Graphic software is the best solution available for representation of the site in graphical form. The Graphical representation enables the user to easily monitor, navigate and control the FAS installed on site. The software also provides an extensive History log for the user to analyze the system.

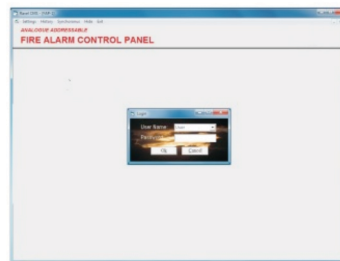
Features

- User friendly software based on Guided User Interface
- Facility to monitor & control the status of the FACP from the windows based system.
- Visual and Sound alerts for the fire and fault conditions.
- Instant Pop up's for any Events
- For Alarm Management as well as system maintenance.
- All information available on a single screen allowing quick assessment & action.
- Facility to "Zoom In & Out" for better clarity while identifying the alarm location.
- The Event Log details with complete history of activity of the Fire Alarm System.
- Three level multi user access.

Screen Shots



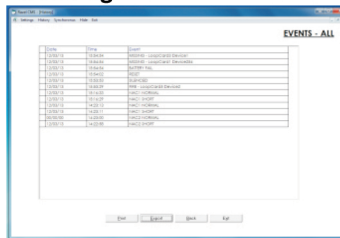
Site Details



Start-UP Screen



Event Log



Event History



AVANI- SOFT Graphic Software

Specification

Recommended Operating Systems	Windows XP Professional 7 & 8 (‘Home’ package variants can be used if network connectivity is not required)
Monitor	Monitor (minimum 17” and support a screen resolution 1024 X 768
Keyboard	Required
CD ROM Drive	Required for software installation
Disk Space	40Gb Hard Drive (Minimum Recommended)
Backup Device	Backup device recommended (e.g. CDR, USB, ZIP disk)
USB Port	USB Port for communications with Graphics Interface. (Additional serial ports may be necessary if connectivity to other services are required)
Sound Card	Windows compatible soundcard & speakers / On-board sounder required for event notification
Memory	512MB RAM (Minimum Recommended)
Processor	Interl Pentium 4 Processor, 1.8 Ghz or higher
Options	<p>Touch-Screen Monitor (Minimum Specification Suggested):</p> <p>17” supporting a screen resolution of at least 1024 X 768</p> <p>Any resolution above above 1024 X 768 can be supported however, Graphical bitmaps must be created in the appropriate format for the resolution selected.</p> <p>If monitors are to be used in Portrait manner a horizontal screen resolution of at least 950 pixels must be available.</p> <p>1 X Additional Serial / USB port for communications with Touch Screen Controller</p>
Pointing Device	A Mouse or Touch-Screen Monitor is essential Required
Graphics	XGA Graphics Accelerator supporting a minimum 1024 X 768 resolution